



**OFFICE OF THE CHIEF DISTRICT MEDICAL AND PUBLIC HEALTH OFFICER,
KALAHANDI**

**NATIONAL VECTOR BORNE DISEASE CONTROL PROGRAMME, KALAHANDI
BHAWANIPATNA, ODISHA-766001**

Telephone-06670-230010, Email: nvbdcpkalahandi@gmail.com



Letter No. 522 /NVBDCP/KLD

Date: 29/5/26

QUOTATION CALL NOTICE

Sealed Quotations in sealed envelopes with quoted price are hereby invited from reputed suppliers/Distributors/Manufactures having experience in a similar nature, for supply of the following Laboratory items for Zonal Entomological unit, Kalahandi under National Centre for Vector Control Programme, Kalahandi. The interested bidders may download the quotation documents from the website <https://www.kalahandi.nic.in> and submit the same to Chief District Medical and Public Health Officer, Kalahandi. The last date of receipt of the quotation is on or before 29.05.26 at 1 P.M. and same will be opened on dated 30.05.26 at 5 PM in the office chamber of the undersigned.

The tender form duly completed in all respect in two parts i.e. Technical Bid (Cover-A) and Commercial Bid (Cover-B). The bidders should submit the quotation for Technical Bid and Commercial Bid superscribed as " **Quotation for Entomological Laboratory items for the Zonal Entomological Unit, Kalahandi in reference to Advertisement No....., dated.....** " .

Terms and Conditions:

1. The authority reserves the right to select the short list based on evaluation of credentials submitted in the quotations and without assigning any reason to the exclusion of any bidder from the select short list.
2. The items should supply within a week.
3. Income tax, as per the prescribed rate of the Govt. may be deducted as per the existing rule.
4. Photocopy of PAN card, GST Registration, relevant trade license should be provided.
5. Items should be of standard quality as per specification mentioned above.
6. Any enhancement of rates within the validity period of the contract will not be considered.
7. Quotation received after the due date and time shall be rejected. The undersigned shall not be responsible for any postal delay.
8. Bill should be submitted in triplicated after supply of the items, in favour of ADPHO (VBD), Kalahandi.
9. The supply order must be executed within a week from the date of issued of the supply order.
10. Payment will be made after successful completion of supply, if required, No request for advance will be entertained.
11. The quoted items unit price and including GST price should be mentioned separately.
12. Self attested photocopy of relevant up to date & valid (i) Trader license (ii) PAN Card (iii) GST Registration Certificate, (iv) Income Tax Clearance Certificate. The bidders must submit the copy of supply order towards supply of Lab. items for Entomological Laboratory.
13. Rate quoted for items should be valid for 1 (one) year from the date of issuing the supply order.
14. Payment shall be made in favour of the firm/supplier after successful delivery of the items.
15. The agency applying for the supply of goods must have experience in supply of Entomological goods. Supply order of previous supplies to different organization may be attached alongwith the Technical Bid.

Quotation should be addressed to:

**Chief District Medical & Public Health Officer,
Kalahandi
Dist. Head Quarter, Bhawanipatna
Dist: Kalahandi
Pin: 766001**

Kalahandi 29/5/26
**Chief District Medical & Public Health Officer,
Kalahandi**



OFFICE OF THE CHIEF DISTRICT MEDICAL AND PUBLIC HEALTH OFFICER,
KALAHANDI

NATIONAL VECTOR BORNE DISEASE CONTROL PROGRAMME, KALAHANDI
BHAWANIPATNA, ODISHA-766001

Telephone-06670-230010, Email: nvbdcpkalahandi@gmail.com



Letter No. **523** /NVBDCP/KLD

Date:

Date: **29/5/26**

Memo No.

Copy to Notice Board office of CDM& PHO/ADPHO (VBD), Kalahandi/DPMU, NHM, Kalahandi for wide circulation.

Atal Khatun
29/5/26
Chief District Medical and Public Health Officer,
Kalahandi

SPECIFICATION:

1) Mosquito Field Kit for Entomologists - Functional

Product Details

Kit contents:

Mouth aspirator - 1

Field collection bag - 1

Torch - 1

D-cell - 4

Larval pipette (3ml) - 10

Glass larval pipette (10ml capacity) - 1

Test tube 25ml - 1

Magnifying lens - 1

Larval sorting trays - 1

Entomological forceps kit - 1

SS Pure ento pins - 1

Insect dissecting needle - 1

Entomological brush kit - 1

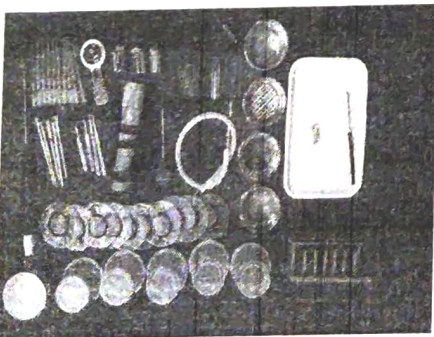
Test Tube Rack - 1

Slides - 1 pack

Fixed larval dipper - 1

Ento strainer kit - 1

Adult mosquito container - 1 pack



Dr. B. K. Sahoo, M.D., F.C.P.S., F.C.P.H., F.C.P.G.
Chief District Medical & Public Health Officer
Kalahandi

B. K. Sahoo
Chief District Medical &
Public Health Officer
Kalahandi

2) Larval Collection ABS Dipper w/ Telescopic Handle

Product Details

The Mosquito Larval Dipper is a durable and ergonomic sampling tool engineered for rapid and reliable collection of mosquito larvae in field and laboratory environments. The dipper bowl is made from high-quality ABS plastic, chosen for its strength, light weight, and chemical resistance, making it suitable for extended use under diverse environmental conditions.

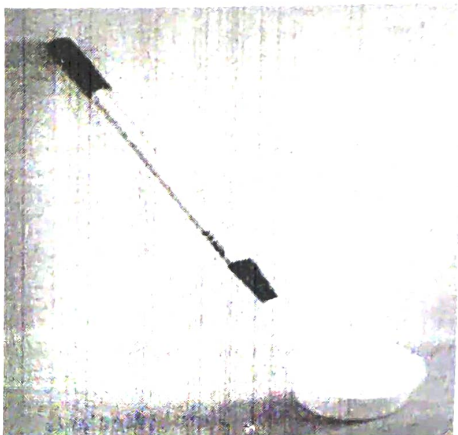
The wide mouth angle of the dipper ensures a secure and stable fit with the aluminum alloy handle, reducing spillage and improving control during sampling. The pure white interior finish provides an excellent high-contrast background, allowing clear and easy observation of collected larvae and other aquatic organisms for further study or counting.

The handle is a three-segment extendable aluminum alloy rod with a variable length from 53 cm to 107 cm, offering flexibility and convenience when accessing shallow or deeper water sources. Its lightweight yet sturdy construction ensures comfortable handling during repetitive sampling tasks in ponds, tanks, containers, and natural water bodies.

This larval dipper is ideal for:

- Mosquito larval surveillance and collection
- Vector control and entomology field work
- Laboratory and educational sampling
- Environmental health monitoring

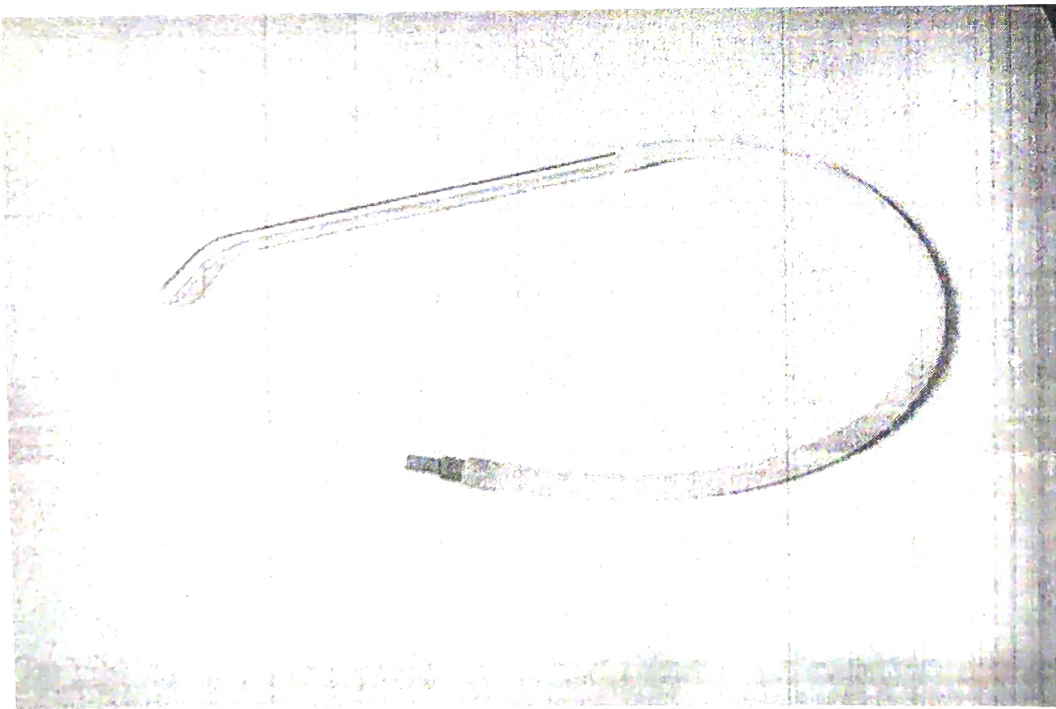
Combining robust ABS construction, adjustable reach, and enhanced visibility, this larval dipper supports efficient and accurate mosquito sampling for public health, research, and vector management programs.




**Chief District Medical &
Public Health Officer
Kalahandi**

Mosquito aspirator WHO Mouth Sucking Aspirator

- Type of Aspirator-Mouth Manual Aspirator
- Battery Power Needed-NA
- Convertible to Semi-Mechanical Aspirator-No, not possible
- Dia of the Aspiration Straw Opening-10, 12, 14.5 or 15.5 mm opening
- Length of Aspiration Straw-20, 30 or 40 cm
- Collection Tube Type-Straight or Bend depending on the model selected
- Suitable for Collection of-For both Insectary, field work
- Suitable for Height-5-7 foot height
- Length of the Silicone Tubing-60-90 cm
- Regular Cleaning of Collection Tubes-Yes, Only with DD water
- Material used-Plastics + Silicone



HC
**Chief District Medical &
Public Health Officer
Kalahandi**

4) CDC Light Trap Complete Set with Insect Cage

Rain Shield with Hanger

Light Assembly Unit

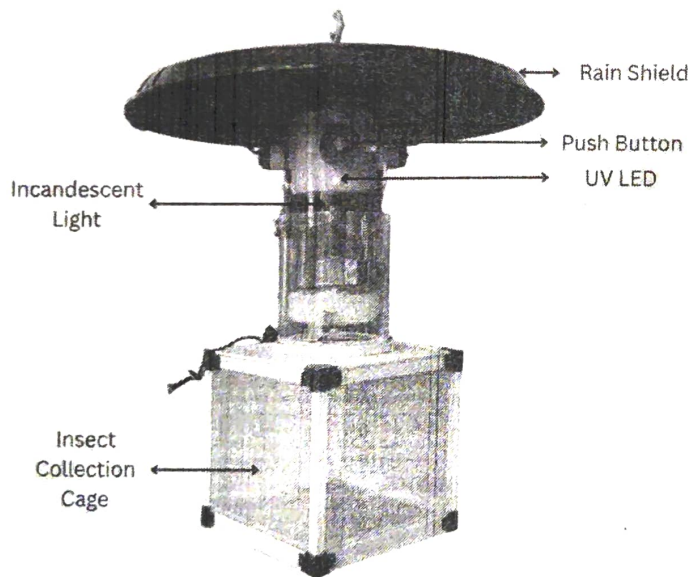
Blower Unit

Insect Collection Container / Cage

Battery (*Not available for exports*)

Battery Charger

Light Assembly-UV LED (6 VDC) – 6 Nos, Incandescent Light (6 VDC) – 1 No



CDC Light Trap Complete Set

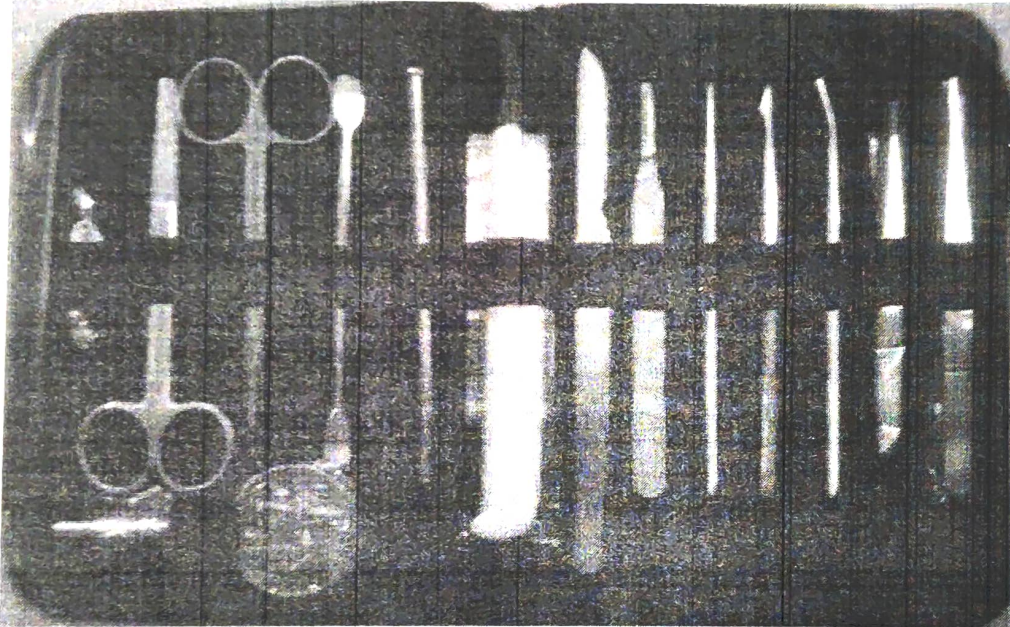
Dissemination of
Information
2024


**Chief District Medical &
Public Health Officer
Kalahandi**

Dissection kit for Entomology

An entomological dissection kit is an essential toolset tailored for the intricate study and examination of insects. Comprising specialized instruments, this kit is adeptly designed to assist in the precise dissection and observation of insect anatomy.

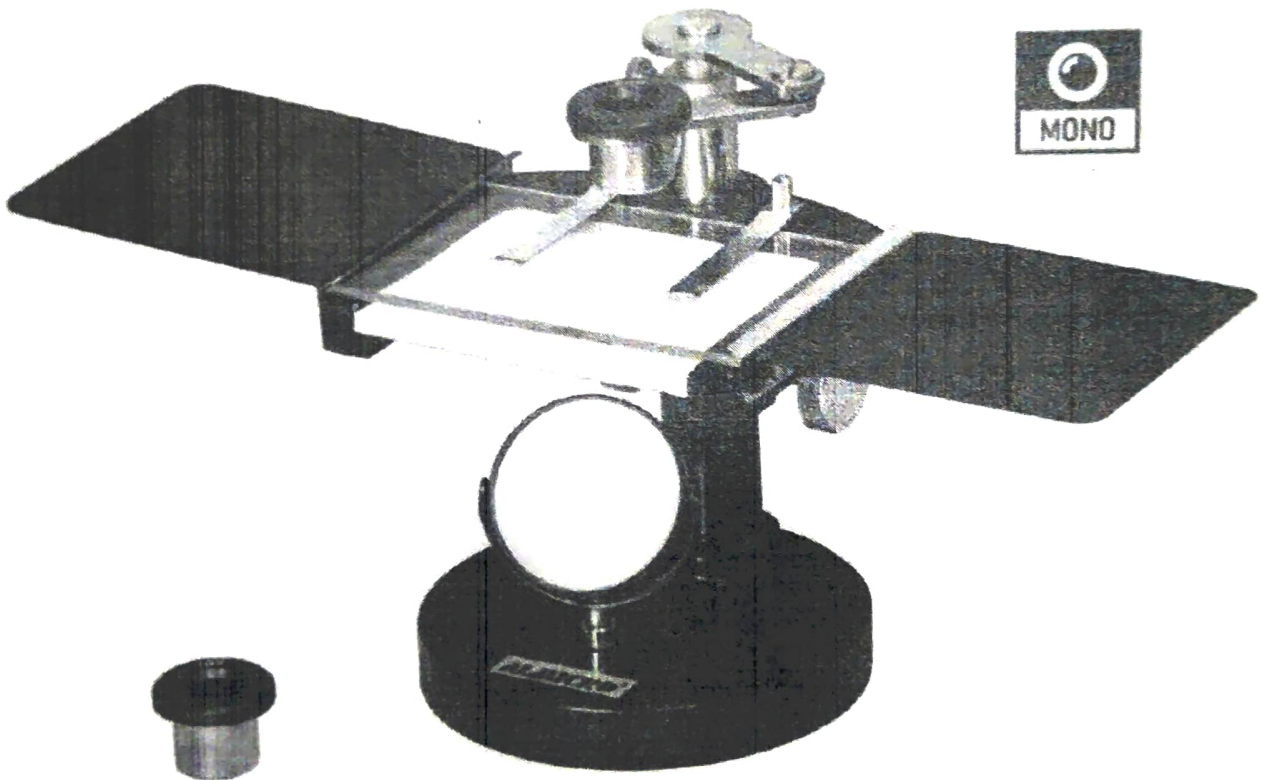
Contents: Micro dissection forceps pointed straight, micro dissection forceps 1 sharp bended, Iris scissors 1, Wide mouth blunt ended -1, 1 sharp pointed straight 12cm, teasing needles -2 , scalpel handle 1, and blades 10



6) Dissecting Microscope

The Dissecting Microscope is designed for demonstration, detailed observation of small organisms, and fine dissection work. It features high eye-point lenses (10× & 20×), a stable rack-and-pinion focusing system, a glass stage with interchangeable white/black plates, and a substage mirror for clear illumination—ideal for educational and laboratory use.

Dissecting Microscope



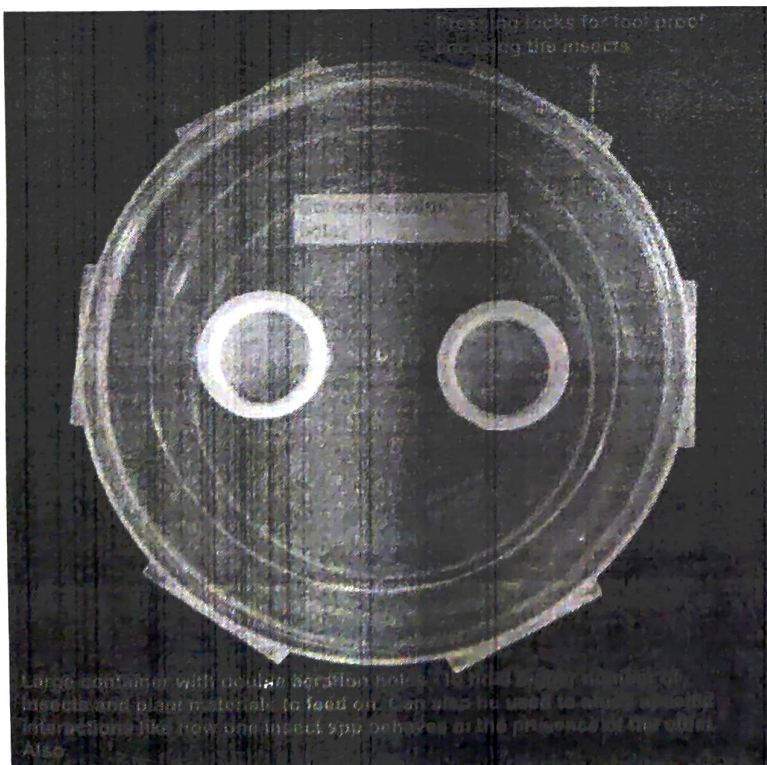

Chief District Medical &
Public Health Officer
Kalahandi

8) Insect Rearing Container

This large transparent insect container is specially designed for entomological research. With a diameter of 27 cm and height of 8 cm, it is ideal for holding a larger number of insects or plant material. The lid features two fine mesh aeration holes that promote airflow while preventing escape. The airtight pressing locks ensure a foolproof enclosure, making it reliable for field studies, insect transport, or lab-based behavioral experiments. Reusable, clear for visibility, and made of durable polypropylene, this container is ideal for mosquito rearing, fruit fly breeding, and behavioral studies.

Key Features:

- Dimensions: 27 cm (diameter) x 8 cm (height)
- Dual aeration mesh holes for optimal airflow
- Leak-proof locking lid for secure enclosure
- Durable, reusable polypropylene material
- Transparent body for observation
- Ideal for rearing mosquitoes, fruit flies, and other insects
- Excellent for entomology, agriculture, and pest control research



At the...
...
...

Hei
**Chief District Medical &
Public Health Officer
Kalahandi**

9) Glass Test Tubes with Cork Stoppers

Product Specifications

Type-Flasks

Dimension (L*W*H)- 38 X 200 Millimeter (Mm) Millimeter (mm)

Size-10X75mm

Height-32 mm. Millimeter (mm)

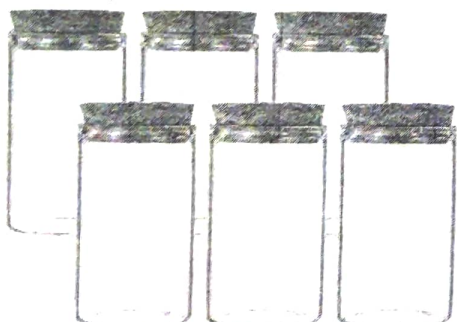
Product Type- Plastic

Weight- between 24.11 and 24.47 g Grams (g)

Equipment Materials- polystyrene or polypropylene and they have plastic caps screwed on

Material- glass

Capacity (Ltr)- 10ml Milliliter (mL)



Digitized by
National Health
Authority

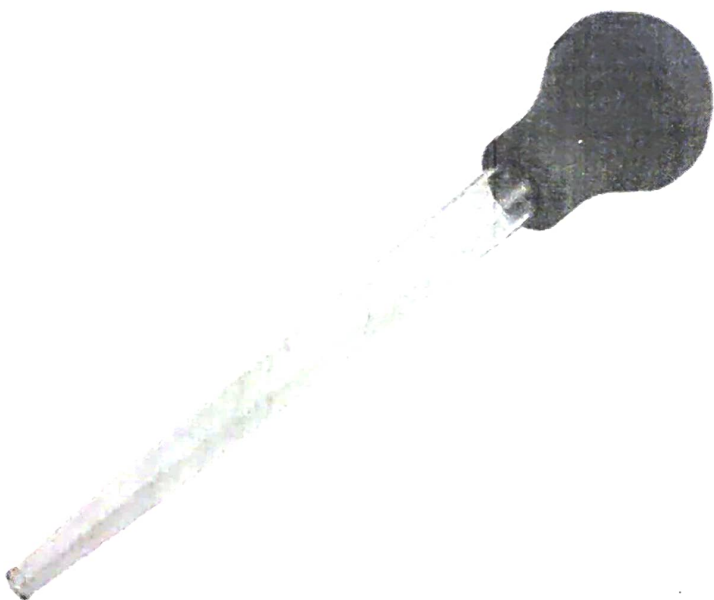

Chief District Medical Officer
Public Health Officer
Kalahandi

10) Dropper

Tapered Glass Pipette

Dropper with latex rubber teat, 15 cm length. Ideal for collection of 1st and 2nd instar larvae. Tapered glass for non-invasive collections without damaging sensitive bodied larvae.

Several types of larval pipettes for various needs; 5ml blunt end 4mm pipettes for regular single pupae screening, 30ml blunt end pipettes for regular bulk transferring larvae for regular colony maintenance, 60-100ml capacity pipette for field screening or transferring the samples under field conditions, disposable 3ml pipettes for contaminant free transfers where fear of contamination through cultures is high.



Chief District Medical & Public Health Officer
Kalahandi


Chief District Medical &
Public Health Officer
Kalahandi

12) Insect Storage Vials with Wooden Cork

Product Type-Cork Stopper

Height-25 mm

Top Diameter-25 mm

Bottom Diameter-20 mm

Design-Tapered Profile



Prepared by: [Name]
Date: [Date]


**Chief District Medical &
Public Health Officer
Kalahandi**

13) Aspee Hand Sprayer Chromium Plated 1.5 liter

Features

- Compact design and sturdy built unit
- All industrial quality brass parts
- Instantaneous spray control by thumb
- Fine mist spray nozzle
- High quality chromium nickel plating
- Also available with under leaf spraying attachment (optional)
- 70 -75 strokes require for developing 40 - 45 psi pressure

Technical Specification :

- Brand : ASPEE
- Model :DS2P
- Type: Hand compressor sprayer
- Tank: Brass
- Tank capacity: 1.5 liter
- Pump barrel: Brass
- Working pressure: 40 - 45 psi
- Dimensions LxWxH445x146x504 mm



He
**Chief District Medical &
Public Health Officer
Kalahandi**

14) Refrigerator (Doubled Door)

- Features
 - Cooling Technology
 - Multi Air Flow Cooling Technology
 - Defrost System
 - Frost Free
 - Deodorizer
 - Inverter Technology
 - Smart Inverter Technology
 - Stabilizer Free Operation
 - Additional Features
 - Moist 'N' Fresh, SuperChill
 - Convertible
 - Smart Inverter Compressor
 - Refrigerant
 - Ecofriendly Refrigerant
 - Temperature Settings
 - Humidity Control
 - Auto Systems
 - Auto Smart Connect
 - Additional Functions
 - Temperature Control : I Micom



2/10/2024 10:00 AM
2/10/2024 10:00 AM
2/10/2024 10:00 AM


**Chief District Medical &
Public Health Officer
Kalahandi**

15) Dissection needle Simple for dissections

dissection needle features a durable stainless steel (SS) tip paired with a sturdy plastic handle, offering both precision and comfort. Designed for detailed anatomical work, this tool is essential for students and professionals in biology and medical labs. The stainless steel tip ensures sharpness and resistance to corrosion, while the lightweight plastic handle provides a comfortable grip for extended use.



5/11/2024
10:00 AM

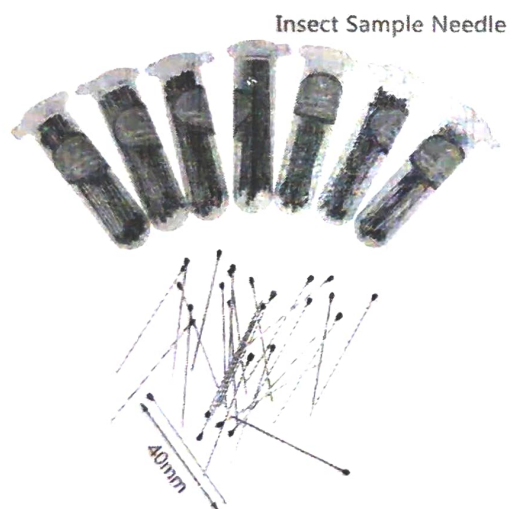
12e
**Chief District Medical &
Public Health Officer
Kalahandi**

16) Insect Pins

Each pin is 40mm (just over 1.5 in) in length.

Dimensions for each size of pin:

- #00 - very small insects (flies, ants)
- #0 - small insects (fireflies, houseflies)
- #1 - small insects (spiders, yellow jackets)
- #2 - small butterflies and moths
- #3 - medium-sized butterflies and moths
- #4 - large butterflies and beetles
- #5 - large insects, scorpions



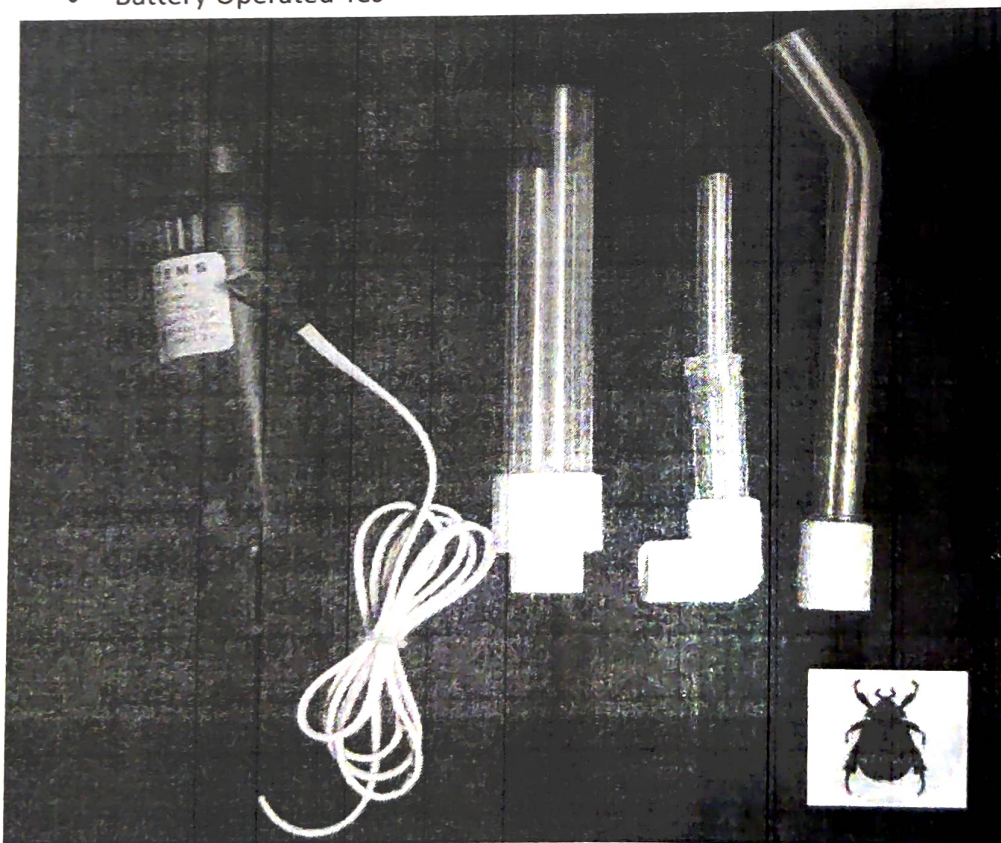
8
100
100


Chief District Medical &
Public Health Officer
Kalahandi

17) Mechanical Aspirator Simple

Specifications

- Types of Aspirator- Mechanical Aspirator
- Power Requirement- DC
- Aspirator Straw- 10, 20, and 30cm
- Type of Aspirator Straw - Straight
- Opening of the Aspiration Straw- 10mm
- Suitable for - Agriculture insects
- Warranty on Aspirator-NA
- Warranty on Accessories like Collection Vial and Straw-NA
- Total Number of Aspirator Straws-3 no's
- Battery Charger Supplied- yes
- Battery Type Chargeable-Yes
- Capacity of Battery Chargeable-6v
- Chargeable Power-1.0 amp
- DC Power Use-Yes
- Battery Operated-Yes



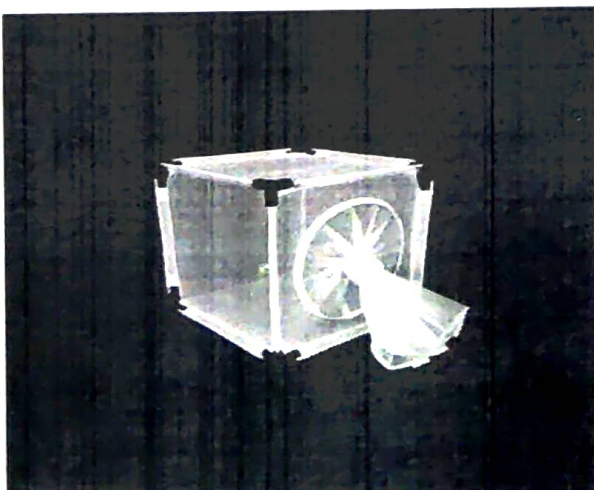
VA
**Chief District Medical &
Public Health Officer
Kalahandi**

18) Insect rearing cage

Specifications:

Product Specification: 4E-M-W-202020 Insect Cage

- **Dimensions:**
 - Length: 24.5 cm
 - Width: 24.5 cm
 - Height: 24.5 cm
- **Net Weight:** 180 grams
- **Main Material:**
 - Knitted Mesh (Nylon)
 - Mesh Size: 44 x 32 (650 μ m aperture)
- **Panels:**
 - **Mesh Panels:** All sides except the floor
 - **Clear Panel:** None
 - **Floor Material:** Mesh for floor. The cage can be kept with weight as the weight directly falls on the floor. However, you can't lift the cage with weight as this might damage the cage. For this, you need to buy the floor separately made of strong material.
- **Opening:**
 - 1 x Front sleeve opening (17 cm diameter)
 - Allows for easy access to insects and food replacement
- **Framework:**
 - External aluminium frame
 - Easy to assemble with connectors
 - Stable netting sewn to match and hold the frame securely




**Chief District Medical Officer &
Public Health Officer
Kalahandi**

19) Bioassay WHO Cones Kit Includes Aspirator

The WHO Cone Bioassay plays an integral role in the evaluation of the efficacy of long-lasting insecticidal nets as well as insecticides used in indoor residual spraying. The test is used on a variety of treated substrates, such as pieces of bed nets, mud, cement and wood. The package consists of plastic cones only. The additional requirements to perform cone bioassay like the solid surfaces, treatment materials, clips, cotton plugs and others are to be purchased separately as this can't be considered in general to list the items here for the purchase.

Cone dimensions:

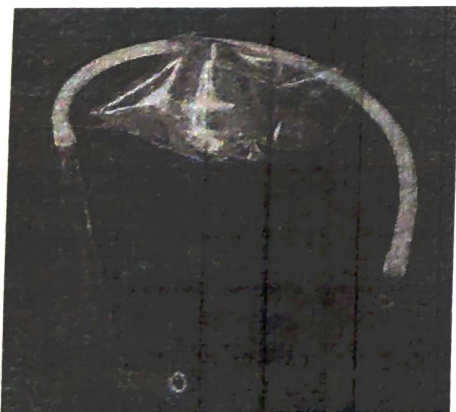
- Diameter: 12 cm
- Height: 9 cm
- Volume: 180 cm³

Cone Bioassay Procedure

The cone bioassay is a standardized test used to assess the effectiveness of insecticides, especially those applied to mosquito nets. Here's a breakdown of the typical procedure:

Materials:

- WHO-specified bioassay cones (12 cm diameter, 9 cm height)
- Holding cages or cups for mosquitoes
- Aspirator for transferring mosquitoes
- Bungs for sealing cone openings
- Timer
- Insecticide-treated material (e.g., net sample)
- Control material (untreated net sample)
- Mortality recording sheet



Handwritten signature

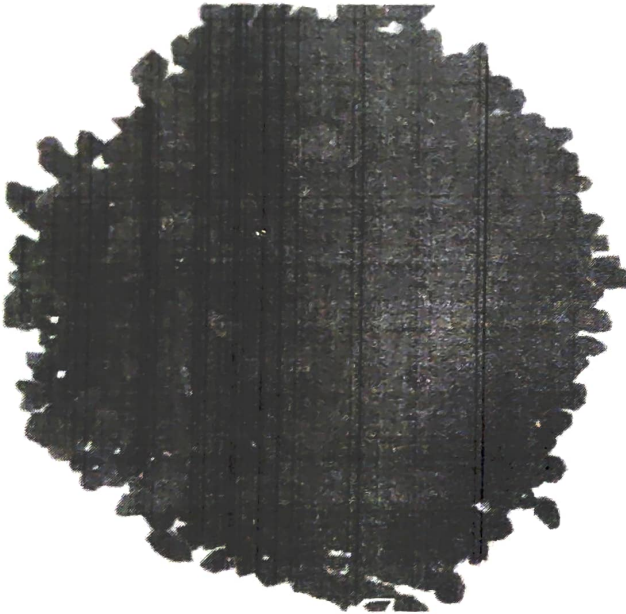
**Chief District Medical &
Public Health Officer
Kalahandi**

20) Silica Gel Self Indicating

Product Details

Self-indicating silica gel is a desiccant used to control moisture levels in various environments. Unlike regular silica gel, self-indicating silica gel contains moisture-sensitive dyes that change color when the gel becomes saturated, indicating the need for replacement or regeneration. Typically, it changes from blue to pink or orange to green, depending on the specific dye used.

This type of silica gel is commonly used in packaging, electronics, pharmaceuticals, and sensitive equipment storage. It helps prevent mold, mildew, corrosion, and degradation by absorbing excess moisture. The color change feature allows for easy monitoring, ensuring optimal humidity control without the need for additional instruments.



20/10/2023
1. 10/10/2023
10/10/23

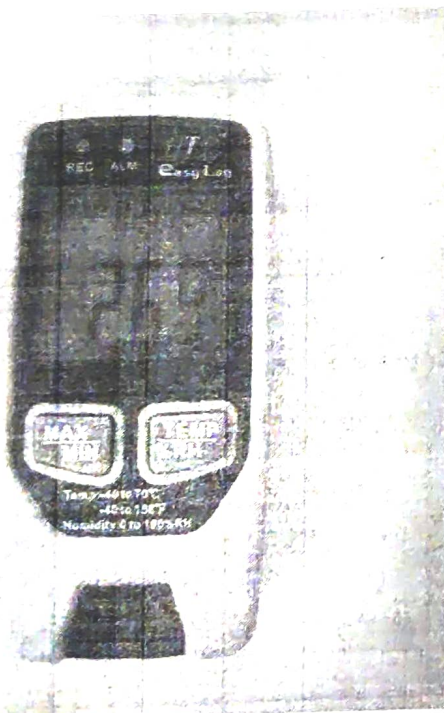
Me
**Chief District Medical &
Public Health Officer
Kalahandi**

21) Data Logger Temperature and Humidity Recordings

Product Details

Data logger

- temperature and humidity recording
- 500 day battery life
- compact design
- LCD display
- Kilog-lite software : complimentary
- 16000 measuring points
- USB Connection
- Standard interchangeable batteries



16
**Chief District Medical &
Public Health Officer
Kalahandi**

23) Test Tubes



Key Features

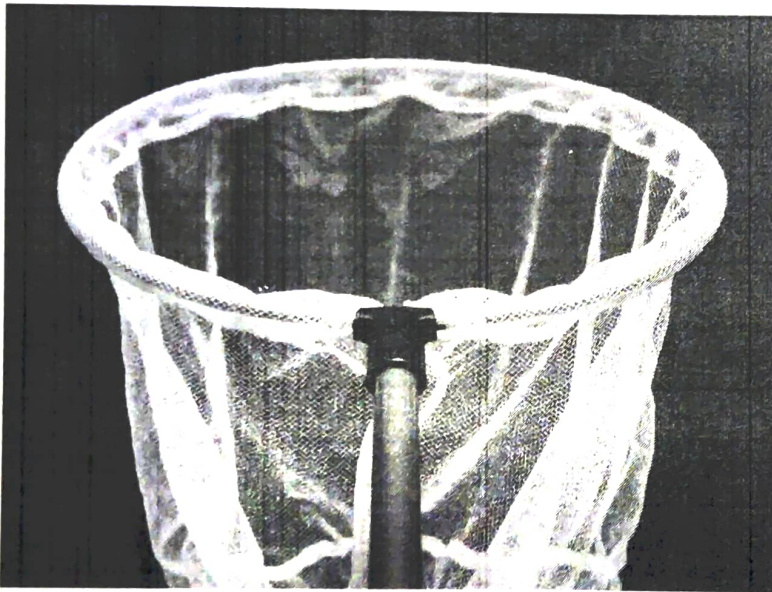
- Designed with a Round Bottom.
- Made Thick-Walled, Mechanically Very Resistant.
- High Thermal Shock Resistance & Designed with a Rim.
- Capacity -27ml

Chief District Medical & Public Health Officer
Kalahandi


Chief District Medical &
Public Health Officer
Kalahandi

24) Insect Collection Net

Insect collection net is made of fine quality mosquito net and an GI ring with an powder coated MS or mild steel pole. The pole has female connector that connects the male connector attached/screwed to the insect collection ring. The pole is made of MS pipe which is powder coated for durability and for a premium look. Each of the MS pole has been attached with finely designed rubber supporter considering ergonomics for insect collection and for a firm support. The insect collection net ring has 30-40cm diameter (variants are available. However for simple collections we recommend 30cm ring and 60cm length) and is attached with a insect collecting net.



Chief District Medical Officer
Public Health Officer
Kalahandi


Chief District Medical &
Public Health Officer
Kalahandi

25) Larval Trays

The larval tray is is light weight and durable. After filling with water, it is not easy to twist or deform. The color of this tray is ivory white, so the mosquito larval in the water can be clearly seen. The bottom has four round feet, which are crossed, stacked, and not easy to slide off, saving your workspace. The size and depth of this tray are moderate and best suitable for rearing mosquito larvae. They can also contain items or bottle-classified specimens.

- Dimensions: L35 x W26 x H4.5 cm
- Net Weight: 325 -500grams




**Chief District Medical &
Public Health Officer
Kalahandi**